

## Errata Sheet for Minor Corrections to Trabuco Canyon Water District 2015 Urban Water Management Plan (UWMP)

This errata sheet logs minor content errors that were identified after final adoption of the Trabuco Canyon Water District 2015 UWMP. DWR has determined that these corrections are minor and do not require the UWMP to be amended.

These data errors have been corrected in the Department of Water Resources (DWR) UWMP database at <https://wuedata.water.ca.gov/secure/>

This errata sheet has been filed with the UWMP in all locations where it is made publicly available, including the California State Library. Errata may be submitted to State Library via email to [cslgps@library.ca.gov](mailto:cslgps@library.ca.gov)

Name and agency of the person filing errata sheet:

Lorrie Lausten

---

Name

Trabuco Canyon Water District

---

Agency

#	Description of Correction	Location	Rationale	Date Error Corrected
1	Remove language that includes information about the DOF.	UWMP Report Section 2.5.1.3	Previous language did not reflect the methodology used to calculate population for the District.	8/9/2018
2	Clarify if groundwater has been adjudicated.	UWMP Report Section 3.3.1	Previously no language was included about groundwater adjudication.	8/9/2018
3	Include statement about overdraft condition.	UWMP Report Section 3.3.1	Previously no language was included about overdraft conditions.	8/9/2018

4	Clarify the relationship between TCWD and San Juan Basin Authority.	UWMP Report Section 3.3.1	While not a member agency of the San Juan Basin Authority, the Authority still recognizes the water demand that the District has seasonally.	8/9/2018
5	Remove item from Restrictions and Prohibitions on End Uses.	UWMP Report Table 5-3 and Appendix B Standardized Table 8-2	Information is more appropriate for the Consumption Reduction Methods table.	8/9/2018
6	Provide additional information on consumption reduction methods.	UWMP Report Table 5-4 and Appendix B Standardized Table 8-3	Information previously provided was incomplete.	8/9/2018
7	Remove Chiquita WRP from recycled water tables.	UWMP Report Tables 6-1 and 6-2 and Standardized Tables 6-2 and 6-3	Since Chiquita WRP is not within the District's service area, it will not be included in the UWMP.	8/9/2018
8	Resolved discrepancy between recycled water tables.	UWMP Report Tables 6-3 and Standardized Table 6-4	Added urban runoff that is collected by the District as a supplemental water source.	8/9/2018
9	Select the correct population methodology for method used.	SBx7-7 Table 2	Methodology used by Center of Demographic Research falls into Method 4 (Other).	8/9/2018

# **Revisions to Main UWMP Document**

### **2.5.1.3 Service Area Population**

The District's service area boundaries do not correspond with the boundaries for a city or census designated place. The service area population is estimated by data prepared by the Department of Finance (DOF). The Center for Demographic Research (CDR) at California State University, Fullerton, is the entity which compiles population data for Orange County based on DOF data. The calculation of the District's baseline water use and water use targets in the 2010 UWMP was based on the 2000 U.S. Census population numbers obtained from CDR. The baseline water use and water use targets in this 2015 UWMP have been revised based on the 2010 U.S. Census population obtained from CDR in 2012.

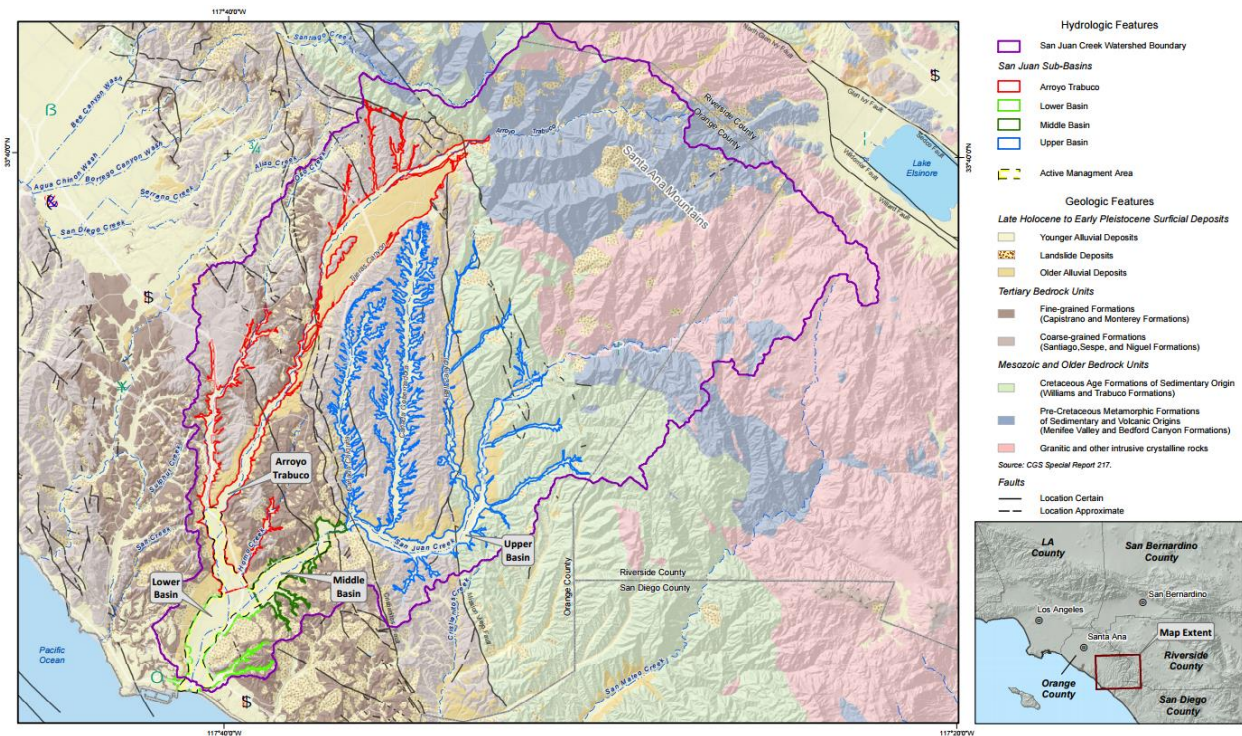
### 3.3 Groundwater

The District owns two wells that pump from the San Juan Groundwater Basin, the Rose Canyon Well and Lang Well. These two wells pump water from a maximum depth of about 40 feet from the Arroyo Trabuco aquifer that is part of the San Juan Basin. The Rose Canyon Well has been a District-owned facility since the mid-1960s, and the District has owned the Lang Well since the early 1980s. These wells were originally privately owned and were dedicated to the District for the beneficial use of its customers. The District has also used a third well, the US Well, in past years through a leasing arrangement with a private party. Currently, the District has no effective leasing agreement with the private party to use the US Well and is not included in projected supplies.

This groundwater source is highly desirable in terms of water quality, cost, and local energy resources. The water pumped from these wells is valuable to the District's water supply, and it contributes to decreasing southern California's dependence on imported water supplies. However, due to ongoing drought conditions, the District has been unable to produce local groundwater during calendar years 2014 and 2015. The District is still projected to produce groundwater in the future albeit at lower rates.

#### 3.3.1 San Juan Basin Characteristics

The San Juan Basin is located in the San Juan Creek Watershed and is comprised of four principal groundwater basins: 1) Lower Basin, 2) Middle Basin, 3) Upper Basin, and 4) Arroyo Trabuco. A map of the four principal groundwater basins is shown on Figure 3-2. **The San Juan Basin is considered a subterranean flowing stream and is therefore subjected to the State Water Resources Control Board's water rights purview. It is not an adjudicated groundwater basin and has not been identified by DWR as overdrafted.** The Middle Basin, Lower Basin, and Lower Trabuco consists of approximately 5.9 square miles of water bearing alluvium. Groundwater occurs in the relatively thin alluvial deposits along the valley floors and within the major stream channels. The younger alluvial deposits within the Basin consists of a heterogeneous mixture of sand, silts, and gravel.



**Figure 3-2: Principal Groundwater Basins for the San Juan Groundwater Basin**

The physical boundaries of the San Juan Basin include the Santa Ana Mountain to the north, sedimentary rock formations to the sides of the Upper Basin and Arroyo Trabuco, and the Pacific Ocean to the south.

The Basin is recharged through a variety of sources such as:

- Streambed infiltration in San Juan Creek, Horno Creek, Oso Creek, and Arroyo Trabuco.
- Subsurface inflows along boundaries at the head of the tributaries upstream and other minor subsurface inflows from other boundaries.
- Precipitation and applied water.
- Flow from fractures and springs.

Discharge of groundwater from the Basin occurs from a variety of sources such as:

- Groundwater production
- Rising groundwater
- Evapotranspiration
- Outflow to Pacific Ocean

Currently, five agencies have groundwater rights to the Basin and uses this water for either municipal purposes or for irrigation. The agencies with groundwater rights to the Basin and their current rights are listed below:

- South Coast Water District: 1,300 AFY
- San Juan Basin Authority: 8,026 AFY
- Santa Margarita Water District: 643 AFY
- San Juan Hills Golf Course: 450 AFY
- City of San Juan Capistrano: 3,325 AFY

The Basin is governed by the SJBA and is a Joint Power Agency comprised of representatives from four local jurisdictions, Santa Margarita Water District (SMWD), Moulton Niguel Water District (MNWD), the City of San Juan Capistrano, and South Coast Water District (SCWD). The SJBA has recently adopted the concept of “adaptive management” of the San Juan Groundwater Basin to vary pumping from year to year based on actual basin conditions derived from monitoring efforts. This is due in part to the SWRCB characterization of the Basin as a “flowing underground stream” and because the storage in the Basin is small relative to recharge and production. The range of natural yield of the Basin is 7,000 AFY to 11,000 AFY. Work is underway to construct rubber dams and increase recharge with recycled water to increase the recharge of the Basin by 4,000 AFY to 7,000 AFY (SJBA, San Juan Basin Groundwater and Facilities Management Plan, November 2013).

The District is not a member agency of SJBA. The District pumps groundwater under the influence of surface water from its shallow wells on a seasonal basis when supplies are available. SJBA considers the District’s pumping when planning and considers it to prevent overdrafting.

### 3.3.2 Groundwater Historical Extraction

A summary of the volume of groundwater pumped by the District is shown in Table 3-2. The District did not pump any groundwater in 2014 and 2015 due to drought conditions.

Table 3-2: Groundwater Volume Pumped (AF)

Retail: Groundwater Volume Pumped						
Groundwater Type	Location or Basin Name	2011	2012	2013	2014	2015
Alluvial Basin	Arroyo Trabuco Aquifer	476	365	44	0	0
<b>TOTAL</b>		476	365	44	0	0
NOTES:						



### 5.5.1 Prohibitions

Conservation Ordinance 2008-18 lists water conservation requirements which shall take effect upon implementation by the District. These prohibitions shall promote the efficient use of water, reduce or eliminate water waste, and enable implementation of the District's Water Shortage Contingency Measures. The prohibitions and the stages at which they take effect can be found in Table 5-3.

**Table 5-3: Restrictions and Prohibitions on End Uses**

<b>Retail Only: Restrictions and Prohibitions on End Uses</b>			
Stage	Restrictions and Prohibitions on End Users	Additional Explanation or Reference	Penalty, Charge, or Other Enforcement?
Permanent Year-Round	Landscape - Limit landscape irrigation to specific times	Watering of lawn, landscape or other turf areas except between the hours of 6:00 p.m. and 9:00 a.m. is prohibited, except by use of a hand -water shut -off nozzle or device, or for very short periods of time for the express purpose of adjusting or repairing an irrigation system.	No
Permanent Year-Round	Landscape - Other landscape restriction or prohibition	Watering or irrigating of lawn, landscape, or other vegetated area with potable water using a landscape irrigation system or a watering device that is not continuously attended is limited to no more than ten (10) minutes watering per day per station. This does not apply to landscape irrigation systems that exclusively use very low-flow drip type irrigation systems when no emitter produces more than two (2) gallons of water per hour and weather-based controllers or stream rotor sprinklers that meet a seventy percent (70%) efficiency standard.	No

**Retail Only: Restrictions and Prohibitions on End Uses**

Stage	Restrictions and Prohibitions on End Users	Additional Explanation or Reference	Penalty, Charge, or Other Enforcement?
Permanent Year-Round	Landscape - Other landscape restriction or prohibition	No person shall allow lands, groundcover, shrubbery, other landscape material, or open ground, to be watered at any time while it is raining. Automatic irrigation controllers may be turned off manually. All irrigation controllers associated with dedicated landscape meters shall have a rain shutoff device which overrides the program in the event of rainfall.	No
Permanent Year-Round	Landscape - Restrict or prohibit runoff from landscape irrigation		No
Permanent Year-Round	Other - Prohibit use of potable water for washing hard surfaces		No
Permanent Year-Round	Other - Customers must repair leaks, breaks, and malfunctions in a timely manner		No
Permanent Year-Round	Water Features - Restrict water use for decorative water features, such as fountains	Operating a water fountain or other decorative water feature that does not use recirculated water is prohibited.	No
Permanent Year-Round	Other - Prohibit vehicle washing except at facilities using recycled or recirculating water		No

Retail Only: Restrictions and Prohibitions on End Uses			
Stage	Restrictions and Prohibitions on End Users	Additional Explanation or Reference	Penalty, Charge, or Other Enforcement?
Permanent Year-Round	CII - Restaurants may only serve water upon request		No
Permanent Year-Round	CII - Lodging establishment must offer opt out of linen service		No
Permanent Year-Round	Other	Installation of single pass cooling systems is prohibited in buildings requesting new water service.	No
Permanent Year-Round	Other	Installation of non-re-circulating water systems is prohibited in new commercial conveyor car wash and new commercial laundry operations.	No
Permanent Year-Round	Other	Commercial car wash facilities shall not permit the washing of any boat or vehicle in such facility or on its premises, other than by the following methods: 1) use of mechanical automatic car wash facilities using water recycling equipment, 2) use of a hose that operates on a timer and shuts off automatically at the expiration of the time period, 3) use of a hose equipped with an automatic shutoff nozzle, and/or 4) use of bucket and hand washing.	No
Permanent Year-Round	Other	No person shall use a water hose to wash any type of equipment or machinery, or any portion thereof, unless the hose is equipped with an automatic shutoff nozzle.	No
Permanent Year-Round	Other	No person shall use a water hose, including pressure-washing, to clean the exterior of any building or structure unless such hose is equipped with an automatic shutoff nozzle.	No

**Retail Only: Restrictions and Prohibitions on End Uses**

Stage	Restrictions and Prohibitions on End Users	Additional Explanation or Reference	Penalty, Charge, or Other Enforcement?
Permanent Year-Round	Other water feature or swimming pool restriction	No person shall empty and refill a swimming pool except to prevent or repair structural damage or to comply with public health regulations or directives or upon written recommendations of a pool maintenance or repair professional.	No
Permanent Year-Round	CII - Commercial kitchens required to use pre-rinse spray valves		No
Permanent Year-Round	Other	No person may use water from any District fire hydrant for any purpose other than fire suppression or emergency aid, without first obtaining a District hydrant meter account or written approval from the Water Conservation Coordinator or his/her designee. Absent such a meter or written permission, current District water theft and meter tampering penalties, charges and policies will be applied based on the District's Rules and Regulations.	No
Permanent Year-Round	Other	Every person shall minimize runoff beyond the immediate area of use. Every person is deemed to have under their control at all times their distribution lines and facilities and to know the manner and extent of their water use and excess runoff. Gutter flooding is specifically prohibited.	No
Permanent Year-Round	Other	No person shall cause or permit the indiscriminate running of water not otherwise prohibited above which is wasteful and without reasonable purpose.	No

**Retail Only: Restrictions and Prohibitions on End Uses**

Stage	Restrictions and Prohibitions on End Users	Additional Explanation or Reference	Penalty, Charge, or Other Enforcement?
1	Landscape - Limit landscape irrigation to specific days	Watering or irrigation of lawn, landscape, or other vegetated area is limited to four (4) calendar days per week on a schedule established and posted by the District. During the months of November through March, watering or irrigating of lawn, landscape, or other vegetated area with potable water is limited to no more than three (3) days per week on a schedule established and posted by the District. This restriction does not apply to any landscape irrigation system that exclusively uses very low-flow drip irrigation where no emitter produces more than two (2) gallons of water per hour and by use of a hand-held bucket or similar container, a hand-held hose equipped with a positive self-closing water shut-off nozzle or device, or for very short periods of time for the express purpose of adjusting or repairing an irrigation system.	Yes
1	Landscape - Other landscape restriction or prohibition	Watering or irrigating of lawn, landscape or other vegetated area is limited to five (5) minutes watering per station per day. This subsection does not apply to landscape irrigation systems that exclusively use very low-flow drip irrigation where no emitter produces more than two (2) gallons of water per hour and weather based controllers or stream rotor sprinklers that meet a 70% efficiency standard.	Yes
1	Other - Customers must repair leaks, breaks, and malfunctions in a timely manner	Leaks, breaks, and other malfunctions must be corrected in no more than seventy-two (72) hours of receiving notice from the District.	Yes

**Retail Only: Restrictions and Prohibitions on End Uses**

Stage	Restrictions and Prohibitions on End Users	Additional Explanation or Reference	Penalty, Charge, or Other Enforcement?
1	Other - Prohibit use of potable water for washing hard surfaces		Yes
2	Landscape - Limit landscape irrigation to specific days	Watering or irrigation of lawn, landscape, or other vegetated area is limited to two (2) calendar days per week on a schedule established and posted by the District. During the months of November through March, watering or irrigating of lawn, landscape, or other vegetated area with potable water is limited to no more than one (1) day per week on a schedule established and posted by the District. This restriction does not apply to any landscape irrigation system that exclusively uses very low-flow drip irrigation where no emitter produces more than two (2) gallons of water per hour and by use of a hand-held bucket or similar container, a hand-held hose equipped with a positive self-closing water shut-off nozzle or device, or for very short periods of time for the express purpose of adjusting or repairing an irrigation system.	Yes
2	Other - Customers must repair leaks, breaks, and malfunctions in a timely manner	Leaks, breaks, and other malfunctions must be corrected in no more than forty-two (42) hours of receiving notice from the District.	Yes
2	Water Features - Restrict water use for decorative water features, such as fountains	The operation of any ornamental fountain or similar structure is prohibited.	Yes

**Retail Only: Restrictions and Prohibitions on End Uses**

Stage	Restrictions and Prohibitions on End Users	Additional Explanation or Reference	Penalty, Charge, or Other Enforcement?
2	Other water feature or swimming pool restriction	Filling or refilling ornamental lakes or ponds is prohibited, except to the extent needs to sustain aquatic life or to protect public health or sanitation, provided that such animals are of significant value and have been actively managed within the water feature prior to declaration of a supply shortage.	Yes
2	Other water feature or swimming pool restriction	Refilling of more than one (1) foot and initial filling of residential swimming pools or outdoor spas with potable water is prohibited.	Yes
3	Landscape - Prohibit all landscape irrigation	This restriction does not apply to the maintenance of vegetation that are watered using a hand-held bucket or similar container, a hand-held hose equipped with a positive self-closing water shut-off nozzle or device, or a very low-flow drip type irrigation systems when no emitter produces more than two (2) gallons of water, the maintenance of existing landscape necessary for fire protection and for soil erosion control, maintenance of plant materials identified to be rare or essential to the well-being of rare animals, and actively irrigated environmental mitigation projects.	Yes
3	Other - Prohibit vehicle washing except at facilities using recycled or recirculating water	Using water to wash or clean a vehicle is prohibited.	Yes

**Retail Only: Restrictions and Prohibitions on End Uses**

Stage	Restrictions and Prohibitions on End Users	Additional Explanation or Reference	Penalty, Charge, or Other Enforcement?
3	Other - Customers must repair leaks, breaks, and malfunctions in a timely manner	Leaks, breaks, and other malfunctions must be corrected in no more than twenty-four (24) hours of receiving notice from the District.	Yes

NOTES:



### 5.5.3 Consumption Reduction Methods

Table 5-4 lists the consumption reduction methods that will be used to reduce water use in restrictive stages.

**Table 5-4: Stages of Water Shortage Contingency Plan - Consumption Reduction Methods**

Retail Only: Stages of Water Shortage Contingency Plan - Consumption Reduction Methods		
Stage	Consumption Reduction Methods by Water Supplier	Additional Explanation or Reference
All	Expand Public Information Campaign	The District provides public education by contracting with MWDOC through the Choice Program. The program includes a public website, school programs, water news in the local newspaper, quarterly Water Policy Dinners, annual Water summit, and tours of water facilities.
All	Provide Rebates on Plumbing Fixtures and Devices	The District offers rebates to CII and residential customers (by contracting with MWDOC through its Choice Program) on devices such as laminar flow restrictors, dry vacuum pumps, premium high efficiency toilets.
All	Provide Rebates for Landscape Irrigation Efficiency	The District offers rebates to CII and residential customers (by contracting with MWDOC through the Choice Program) on devices such as spray nozzles, drip irrigation, smart irrigation timers, soil moisture sensor, in-stem flow regulator.
All	Provide Rebates for Turf Replacement	The District offers rebates for turf replacement by contracting with MWDOC through the Choice Program.

**Retail Only: Stages of Water Shortage Contingency Plan - Consumption Reduction Methods**

Stage	Consumption Reduction Methods by Water Supplier	Additional Explanation or Reference
3	Other	No new potable water service, new temporary meters, and statement of immediate ability to serve or provide water service will be issued except under the following circumstances: 1) a valid, unexpired building permit has been issued for the project, 2) the project is necessary to protect the public health, safety, and welfare, or 3) the applicant provides substantial evidence of an enforceable commitment that water demands for the project will be offset prior to the provision of a new water meter(s) to the satisfaction of the District.

NOTES:

## 6.2 Wastewater Description and Disposal

The District generates approximately 0.65 MGD of wastewater. The District's wastewater collection system includes approximately 36 miles of sewers and interceptors ranging from 8 inches to 15 inches in diameter, 8 sewer lift stations, and 9 miles of force mains. The existing wastewater collection system consists of two separate areas/systems on the east and west. Wastewater collected in these areas are sent to one of two treatment plants based on location. The District's service area is shown on Figure 6-1.

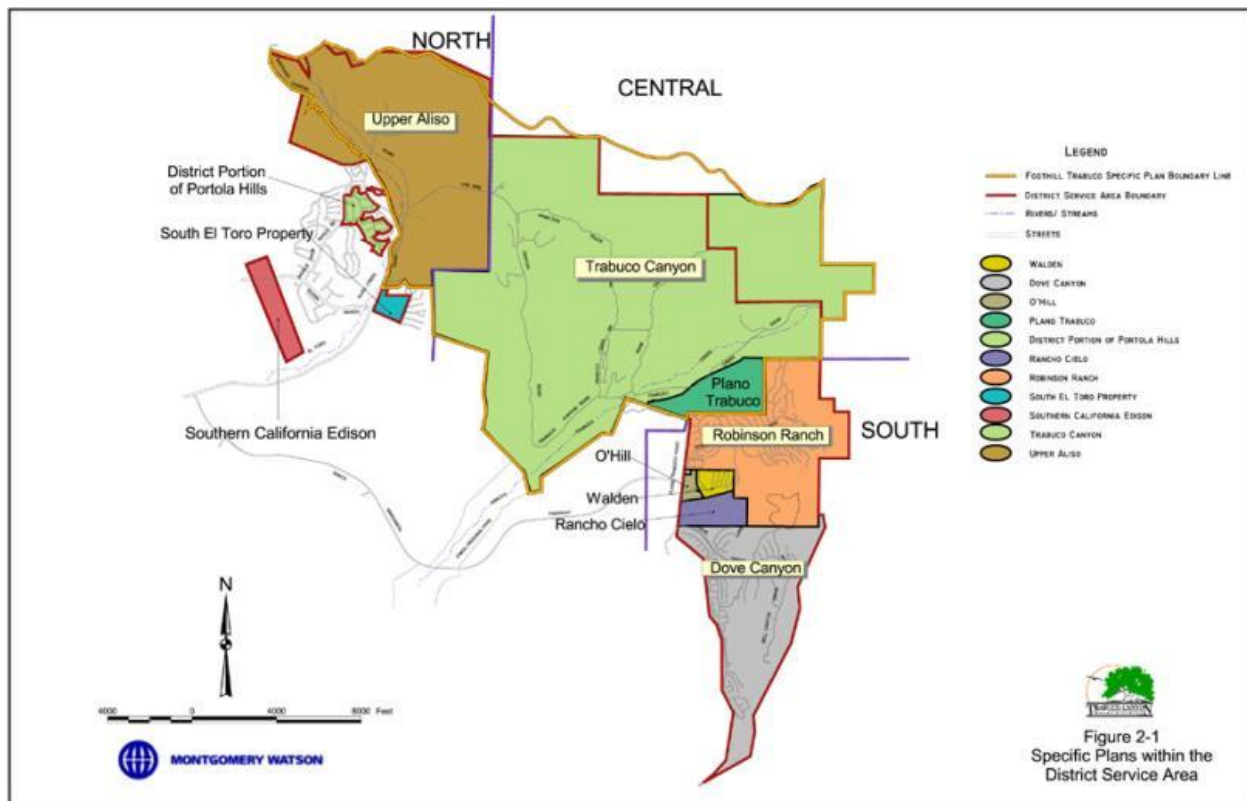


Figure 6-1: Recycled Water Service Area

The District owns and operates the RRWWTP that provides collection and treatment for developments on the east side of the service area. The RRWWTP is located in the Robinson Ranch development shown on Figure 6.1, has a treatment capacity of 0.85 MGD, and the tertiary treated water is fed into the recycled water reservoir that has a storage capacity of 130 AF.

The wastewater from the west side of the District's service area is sent to SMWD's Chiquita Wastewater Reclamation Plant (CWWRP) located in the City of San Juan Capistrano for treatment and disposal. The CWWRP discharge is used for either beneficial reuse or ocean outfall.

Table 6-1 summarizes the wastewater collected by the District in its collection system in 2015. Table 6-2 shows the amount of the District's wastewater treated, recycled and disposed of by the District in 2015.

**Table 6-1: Wastewater Collected Within Service Area in 2015 (AF)**

<b>Retail: Wastewater Collected Within Service Area in 2015</b>					
<b>Wastewater Collection</b>			<b>Recipient of Collected Wastewater</b>		
Name of Wastewater Collection Agency	Wastewater Volume Metered or Estimated?	Volume of Wastewater Collected in 2015	Name of Wastewater Treatment Agency Receiving Collected Wastewater	Treatment Plant Name	Is WWTP Located Within UWMP Area?
Trabuco Canyon Water District	Estimated	630	Trabuco Canyon Water District	Robinson Ranch Wastewater Treatment Plant	Yes
<b>Total Wastewater Collected from Service Area in 2015:</b>		<b>630</b>			
NOTES:					

Table 6-2: Wastewater Treatment and Discharge within Service Area in 2015 (AF)

Retail: Wastewater Treatment and Discharge Within Service Area in 2015									
Wastewater Treatment Plant Name	Discharge Location Name or Identifier	Discharge Location Description	Method of Disposal	Does This Plant Treat Wastewater Generated Outside the Service Area?	Treatment Level	2015 volumes			
						Wastewater Treated	Discharged Treated Wastewater	Recycled Within Service Area	Recycled Outside of Service Area
Robinson Ranch Wastewater Treatment Plant	No discharge	No discharge	Other	No	Tertiary	630	0	630	0
					<b>Total</b>	<b>630</b>	<b>0</b>	<b>630</b>	<b>0</b>
NOTES:									

### 6.3 Current Recycled Water Uses

The District distinguishes between urban runoff and recycled water reclaimed at the treatment plant by designating the treated wastewater as reclaimed, and urban and captured runoff as recycled. This supply is used in the District's non-domestic water system. The District's non-domestic water system is supplied with tertiary treated water from the RRWWTP that is blended with urban runoff from Dove Lake as part of the District's Dry Season Water Recovery Project, also referred to as Urban Runoff Capture and Reuse Project. The local runoff from a section of Trabuco Highlands is captured at the Shadow Rock Detention Basin and conveyed to Dove Lake. The local runoff from Dove Canyon is captured at the Dove and Tick Creek Basins and conveyed to Dove Lake. Local runoff from Robinson Ranch and the remaining portions of Trabuco Highland are captured and stored in Dove Lake to augment the non-potable irrigation system. Aeration and vegetation controls in the lake improve the water quality. The two non-potable supplies are blended in the recycled water storage reservoir prior to distribution or blended and treated and pumped into the recycled water distribution system.

Recycled water is used to irrigate parks, golf courses, and greenbelts in Robinson Ranch, Trabuco Highlands, and Dove Canyon Communities and offsets demand on imported potable water. The District's recycled water is delivered via pipelines to customers within the District service area. The District's recycled water distribution system consists of 5.1 miles of pipeline, two sets of booster pump stations with a total pumping capacity of 6,270 gpm, and two open reservoirs with a combined capacity of 545 million gallons.

The District annually produces approximately 800 AF of recycled water for their service area. This includes non-potable production from the Robinson Ranch treatment plant, urban runoff, and non-potable amounts pumped from Dove Lake. Projected recycled water use increases after 2015 but are consistent through 2040 as shown in Table 6-3.

**Table 6-3: Current and Projected Recycled Water Direct Beneficial Use within Service Area (AF)**

<b>Retail: Current and Projected Recycled Water Direct Beneficial Uses Within Service Area</b>								
Name of Agency Producing (Treating) the Recycled Water:			TCWD					
Name of Agency Operating the Recycled Water Distribution System:			TCWD					
Supplemental Water Added in 2015			173					
Source of 2015 Supplemental Water			Urban Runoff Collected at Dove Lake					
Beneficial Use Type	General Description of 2015 Uses	Level of Treatment	2015	2020	2025	2030	2035	2040
Agricultural irrigation			0	150	0	0	0	0
Landscape irrigation (excludes golf courses)	Parks and greenbelts	Tertiary	397	400	590	590	590	590
Golf course irrigation		Tertiary	406	410	410	410	410	410
Commercial use								
Industrial use								
Geothermal and other energy production								
Seawater intrusion barrier								
Recreational impoundment								
Wetlands or wildlife habitat								
Groundwater recharge (IPR)								
Surface water augmentation (IPR)								
Direct potable reuse								
Other	Type of Use							
		<b>Total:</b>	803	960	1,000	1,000	1,000	1,000
<i>IPR - Indirect Potable Reuse</i>								
<b>NOTES: Recycled water includes urban runoff that is collected in Dove Lake and mixed with treated wastewater.</b>								



**Revisions to  
SB X7-7 Verification Forms**

**SB X7-7 Table 2: Method for Population Estimates**

Method Used to Determine Population (may check more than one)	
<input type="checkbox"/>	<b>1. Department of Finance (DOF)</b> DOF Table E-8 (1990 - 2000) and (2000-2010) and DOF Table E-5 (2011 - 2015) when available
<input type="checkbox"/>	<b>2. Persons-per-Connection Method</b>
<input type="checkbox"/>	<b>3. DWR Population Tool</b>
<input checked="" type="checkbox"/>	<b>4. Other</b> DWR recommends pre-review
NOTES:	

**Revisions to Appendix B**  
**DWR Standardized Tables**

**Table 6-2 Retail: Wastewater Collected Within Service Area in 2015**

Wastewater Collection			Recipient of Collected Wastewater		
Name of Wastewater Collection Agency	Wastewater Volume Metered or Estimated? <i>Drop Down List</i>	Volume of Wastewater Collected in 2015	Name of Wastewater Treatment Agency Receiving Collected Wastewater	Treatment Plant Name	Is WWTP Located Within UWMP Area? <i>Drop Down List</i>
<i>Add additional rows as needed</i>					
Trabuco Canyon Water District	Estimated	630	Trabuco Canyon Water District	Robinson Ranch Wastewater Treatment Plant	Yes
<b>Total Wastewater Collected from Service Area in 2015:</b>		<b>630</b>			
NOTES:					

**Table 6-3 Retail: Wastewater Treatment and Discharge Within Service Area in 2015**

Wastewater Treatment Plant Name	Discharge Location Name or Identifier	Discharge Location Description	Method of Disposal <i>Drop down list</i>	Does This Plant Treat Wastewater Generated Outside the Service Area?	Treatment Level <i>Drop down list</i>	2015 volumes			
						Wastewater Treated	Discharged Treated Wastewater	Recycled Within Service Area	Recycled Outside of Service Area
Robinson Ranch Wastewater Treatment Plant	No discharge	No discharge	Other	No	Tertiary	630	0	630	0
<b>Total</b>						<b>630</b>	<b>0</b>	<b>630</b>	<b>0</b>

NOTES:

**Table 6-4 Retail: Current and Projected Recycled Water Direct Beneficial Uses Within Service Area**

Name of Agency Producing (Treating) the Recycled Water:		TCWD						
Name of Agency Operating the Recycled Water Distribution System:		TCWD						
Supplemental Water Added in 2015		173						
Source of 2015 Supplemental Water		Urban Runoff Collected at Dove Lake						
Beneficial Use Type <i>These are the only Use Types that will be recognized by the DWR online submittal tool</i>	General Description of 2015 Uses	Level of Treatment <i>Drop down list</i>	2015	2020	2025	2030	2035	2040
Agricultural irrigation			0	150	0	0	0	0
Landscape irrigation (excludes golf courses)	Parks and greenbelts	Tertiary	397	400	590	590	590	590
Golf course irrigation		Tertiary	406	410	410	410	410	410
Commercial use								
Industrial use								
Geothermal and other energy production								
Seawater intrusion barrier								
Recreational impoundment								
Wetlands or wildlife habitat								
Groundwater recharge (IPR)								
Surface water augmentation (IPR)								
Direct potable reuse								
Other	Type of Use							
<b>Total:</b>			803	960	1,000	1,000	1,000	1,000
<i>IPR - Indirect Potable Reuse</i>								
NOTES: Recycled water includes urban runoff that is collected in Dove Lake and mixed with treated wastewater.								

**Table 8-2 Retail Only:****Restrictions and Prohibitions on End Uses**

Stage	Restrictions and Prohibitions on End Users	Additional Explanation or Reference	Penalty, Charge, or Other Enforcement ?
Permanent Year-Round	Landscape - Limit landscape irrigation to specific times	Watering of lawn, landscape or other turf areas except between the hours of 6:00 p.m. and 9:00 a.m. is prohibited, except by use of a hand -water shut -off nozzle or device, or for very short periods of time for the express purpose of adjusting or repairing an irrigation system.	No
Permanent Year-Round	Landscape - Other landscape restriction or prohibition	Watering or irrigating of lawn, landscape, or other vegetated area with potable water using a landscape irrigation system or a watering device that is not continuously attended is limited to no more than ten (10) minutes watering per day per station. This does not apply to landscape irrigation systems that exclusively use very low-flow drip type irrigation systems when no emitter produces more than two (2) gallons of water per hour and weather-based controllers or stream rotor sprinklers that meet a seventy percent (70%) efficiency standard.	No
Permanent Year-Round	Landscape - Other landscape restriction or prohibition	No person shall allow lands, groundcover, shrubbery, other landscape material, or open ground, to be watered at any time while it is raining. Automatic irrigation controllers may be turned off manually. All irrigation controllers associated with dedicated landscape meters shall have a rain shutoff device which overrides the program in the event of rainfall.	No

**Table 8-2 Retail Only:****Restrictions and Prohibitions on End Uses**

Stage	Restrictions and Prohibitions on End Users	Additional Explanation or Reference	Penalty, Charge, or Other Enforcement ?
Permanent Year-Round	Landscape - Restrict or prohibit runoff from landscape irrigation		No
Permanent Year-Round	Other - Prohibit use of potable water for washing hard surfaces		No
Permanent Year-Round	Other - Customers must repair leaks, breaks, and malfunctions in a timely manner		No
Permanent Year-Round	Water Features - Restrict water use for decorative water features, such as fountains	Operating a water fountain or other decorative water feature that does not use recirculated water is prohibited.	No
Permanent Year-Round	Other - Prohibit vehicle washing except at facilities using recycled or recirculating water		No
Permanent Year-Round	CII - Restaurants may only serve water upon request		No
Permanent Year-Round	CII - Lodging establishment must		No



**Table 8-2 Retail Only:**

**Restrictions and Prohibitions on End Uses**

Stage	Restrictions and Prohibitions on End Users	Additional Explanation or Reference	Penalty, Charge, or Other Enforcement ?
	offer opt out of linen service		
Permanent Year-Round	Other	Installation of single pass cooling systems is prohibited in buildings requesting new water service.	No
Permanent Year-Round	Other	Installation of non-re-circulating water systems is prohibited in new commercial conveyor car wash and new commercial laundry operations.	No
Permanent Year-Round	Other	Commercial car wash facilities shall not permit the washing of any boat or vehicle in such facility or on its premises, other than by the following methods: 1) use of mechanical automatic car wash facilities using water recycling equipment, 2) use of a hose that operates on a timer and shuts off automatically at the expiration of the time period, 3) use of a hose equipped with an automatic shutoff nozzle, and/or 4) use of bucket and hand washing.	No
Permanent Year-Round	Other	No person shall use a water hose to wash any type of equipment or machinery, or any portion thereof, unless the hose is equipped with an automatic shutoff nozzle.	No
Permanent Year-Round	Other	No person shall use a water hose, including pressure-washing, to clean the exterior of any building or structure unless such hose is equipped with an automatic shutoff nozzle.	No

**Table 8-2 Retail Only:****Restrictions and Prohibitions on End Uses**

Stage	Restrictions and Prohibitions on End Users	Additional Explanation or Reference	Penalty, Charge, or Other Enforcement ?
Permanent Year-Round	Other water feature or swimming pool restriction	No person shall empty and refill a swimming pool except to prevent or repair structural damage or to comply with public health regulations or directives or upon written recommendations of a pool maintenance or repair professional.	No
Permanent Year-Round	CII - Commercial kitchens required to use pre-rinse spray valves		No
Permanent Year-Round	Other	No person may use water from any District fire hydrant for any purpose other than fire suppression or emergency aid, without first obtaining a District hydrant meter account or written approval from the Water Conservation Coordinator or his/her designee. Absent such a meter or written permission, current District water theft and meter tampering penalties, charges and policies will be applied based on the District's Rules and Regulations.	No
Permanent Year-Round	Other	Every person shall minimize runoff beyond the immediate area of use. Every person is deemed to have under their control at all times their distribution lines and facilities and to know the manner and extent of their water use and excess runoff. Gutter flooding is specifically prohibited.	No
Permanent Year-Round	Other	No person shall cause or permit the indiscriminate running of water not otherwise	No

**Table 8-2 Retail Only:**

**Restrictions and Prohibitions on End Uses**

Stage	Restrictions and Prohibitions on End Users	Additional Explanation or Reference	Penalty, Charge, or Other Enforcement ?
		prohibited above which is wasteful and without reasonable purpose.	
1	Landscape - Limit landscape irrigation to specific days	Watering or irrigation of lawn, landscape, or other vegetated area is limited to four (4) calendar days per week on a schedule established and posted by the District. During the months of November through march, watering or irrigating of lawn, landscape, or other vegetated area with potable water is limited to no more than three (3) days per week on a schedule established and posted by the District. This restriction does not apply to any landscape irrigation system that exclusively uses very low-flow drip irrigation where no emitter produces more than two (2) gallons of water per hour and by use of a hand-held bucket or similar container, a hand-held hose equipped with a positive self-closing water shut-off nozzle or device, or for very short periods of time for the express purpose of adjusting or repairing an irrigation system.	Yes
1	Landscape - Other landscape restriction or prohibition	Watering or irrigating of lawn, landscape or other vegetated area is limited to five (5) minutes watering per station per day. This subsection does not apply to landscape irrigation systems that exclusively use very low-flow drip irrigation where no emitter produces more than two (2) gallons of water per hour and weather based controllers or	Yes

**Table 8-2 Retail Only:**

**Restrictions and Prohibitions on End Uses**

Stage	Restrictions and Prohibitions on End Users	Additional Explanation or Reference	Penalty, Charge, or Other Enforcement ?
		stream rotor sprinklers that meet a 70% efficiency standard.	
1	Other - Customers must repair leaks, breaks, and malfunctions in a timely manner	Leaks, breaks, and other malfunctions must be corrected in no more than seventy-two (72) hours of receiving notice from the District.	Yes
1	Other - Prohibit use of potable water for washing hard surfaces		Yes
2	Landscape - Limit landscape irrigation to specific days	Watering or irrigation of lawn, landscape, or other vegetated area is limited to two (2) calendar days per week on a schedule established and posted by the District. During the months of November through march, watering or irrigating of lawn, landscape, or other vegetated area with potable water is limited to no more than one (1) day per week on a schedule established and posted by the District. This restriction does not apply to any landscape irrigation system that exclusively uses very low-flow drip irrigation where no emitter produces more than two (2) gallons of water per hour and by use of a hand-held bucket or similar container, a hand-held hose equipped with a positive self-closing water shut-off nozzle or device, or for very short periods of time for the express purpose of adjusting or repairing an irrigation system.	Yes

**Table 8-2 Retail Only:**

**Restrictions and Prohibitions on End Uses**

Stage	Restrictions and Prohibitions on End Users	Additional Explanation or Reference	Penalty, Charge, or Other Enforcement ?
2	Other - Customers must repair leaks, breaks, and malfunctions in a timely manner	Leaks, breaks, and other malfunctions must be corrected in no more than forty-two (48) hours of receiving notice from the District.	Yes
2	Water Features - Restrict water use for decorative water features, such as fountains	The operation of any ornamental fountain or similar structure is prohibited.	Yes
2	Other water feature or swimming pool restriction	Filling or refilling ornamental lakes or ponds is prohibited, except to the extent needs to sustain aquatic life or to protect public health or sanitation, provided that such animals are of significant value and have been actively managed within the water feature prior to declaration of a supply shortage.	Yes
2	Other water feature or swimming pool restriction	Refilling of more than one (1) foot and initial filling of residential swimming pools or outdoor spas with potable water is prohibited.	Yes
3	Landscape - Prohibit all landscape irrigation	This restriction does not apply to the maintenance of vegetation that are watered using a hand-held bucket or similar container, a hand-held hose equipped with a positive self-closing water shut-off nozzle or device, or a very low-flow drip type irrigation systems when no emitter produces more than two (2) gallons of water, the maintenance of existing landscape necessary for fire protection and	Yes

**Table 8-2 Retail Only:**

**Restrictions and Prohibitions on End Uses**

Stage	Restrictions and Prohibitions on End Users	Additional Explanation or Reference	Penalty, Charge, or Other Enforcement ?
		for soil erosion control, maintenance of plant materials identified to be rare or essential to the well-being of rare animals, and actively irrigated environmental mitigation projects.	
3	Other - Prohibit vehicle washing except at facilities using recycled or recirculating water	Using water to wash or clean a vehicle is prohibited.	Yes
3	Other - Customers must repair leaks, breaks, and malfunctions in a timely manner	Leaks, breaks, and other malfunctions must be corrected in no more than twenty-four (24) hours of receiving notice from the District.	Yes
NOTES:			

**Table 8-3 Retail Only:**

**Stages of Water Shortage Contingency Plan - Consumption Reduction Methods**

Stage	Consumption Reduction Methods by Water Supplier	Additional Explanation or Reference
All	Expand Public Information Campaign	The District provides public education by contracting with MWDOC through the Choice Program. The program includes a public website, school programs, water news in the local newspaper, quarterly Water Policy Dinners, annual Water summit, and tours of water facilities.
All	Provide Rebates on Plumbing Fixtures and Devices	The District offers rebates to CII and residential customers (by contracting with MWDOC through its Choice Program) on devices such as laminar flow restrictors, dry vacuum pumps, premium high efficiency toilets.
All	Provide Rebates for Landscape Irrigation Efficiency	The District offers rebates to CII and residential customers (by contracting with MWDOC through the Choice Program) on devices such as spray nozzles, drip irrigation, smart irrigation timers, soil moisture sensor, in-stem flow regulator.
All	Provide Rebates for Turf Replacement	The District offers rebates for turf replacement by contracting with MWDOC through the Choice Program.
3	Other	No new potable water service, new temporary meters, and statement of immediate ability to serve or provide water service will be issued except under the following circumstances: 1) a valid, unexpired building permit has been issued for the project, 2) the project is necessary to protect the public health, safety, and welfare, or 3) the applicant provides substantial evidence of an enforceable commitment that water demands for the project will be offset prior to the provision of a new water meter(s) to the satisfaction of the District.

NOTES: